

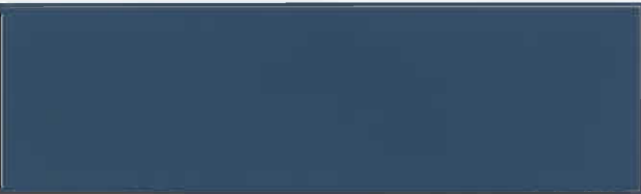
Ceram-A-Star® 1050 “Cool” Color System



Antique Bronze (AZ)



Polar White (PW)



Roman Blue (HB)



Light Stone (LS)



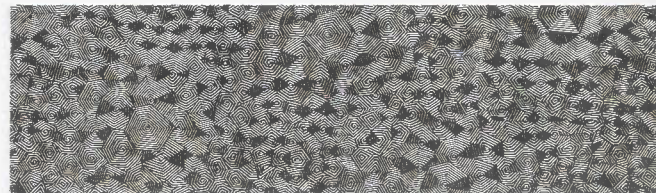
Sahara Tan (HT)



Colonial Red (CR)



Ash Gray (GY)



Galvalume (GL)

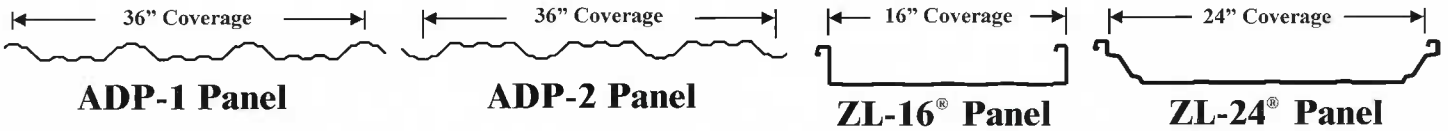
Since all color chips are affected by age, lighting conditions, heat and mechanical processes, the chips on this card may vary slightly in color or finish from actual panels. Consult factory for other colors and finishes.

*See Behlen paint warranties for specific chalk and fade rates.

Ceram-A-Star® is a registered name of AKZO Nobel Coatings, Inc.

Ceram-A-Star® 1050 "Cool" Color System

Frame Buildings



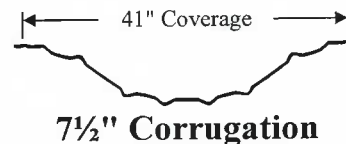
| Colors | ZL-16® & ZL-24® Panels 24 Gauge | ADP Panels 26 Gauge | 3" & 7½" Corr. Panels All Gauges | Total Solar Reflectance (TSR) | | Thermal Emissivity (TE) |
|---------------------|------------------------------------|------------------------|-------------------------------------|-------------------------------|-----------------|-------------------------|
| | | | | Initial | 3-Year Exposure | |
| Polar White (PW) | * | ✓ | * | 0.57 | 0.54 | 0.84 |
| Roman Blue (HB) | * | ✓ | * | 0.31 | 0.31 | 0.84 |
| Light Stone (LS) | * | ✓ | * | 0.52 | 0.54 | 0.84 |
| Antique Bronze (AZ) | * | ✓ | * | 0.26 | 0.26 | 0.84 |
| Sahara Tan (HT) | * | ✓ | * | 0.37 | 0.32 | 0.84 |
| Colonial Red (CR) | * | ✓ | * | 0.28 | 0.25 | 0.83 |
| Ash Gray (GY) | * | ✓ | * | 0.36 | 0.35 | 0.83 |
| Galvalume (GL) | ✓ | ✓ | * | 0.68 | 0.55 | 0.08 |

✓ Denotes standard color and gauge. * Minimum quantity requirements apply

Energy Star Performance Specifications

| Minimum Total Solar Reflectance (TSR) | | |
|---------------------------------------|---------|-----------------|
| Roof Slope | Initial | 3-Year Exposure |
| ≤ 2:12 | 0.65 | 0.50 |
| > 2:12 | 0.25 | 0.15 |

S-Span Buildings



Behlen Mfg. Co.

P.O. Box 569 • 4025 E. 23rd St.

Columbus, NE 68602-0569

PH: 800-228-0340 • FAX: 402-563-7470

www.behlenbuildingsystems.com