

**Fluropon® 70% Kynar 500® “Cool” Color**

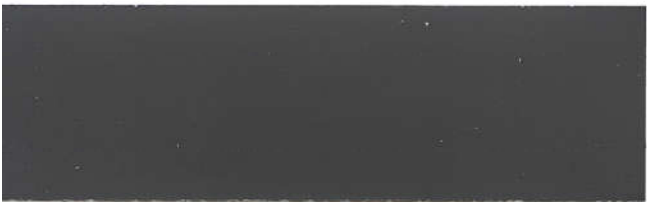
★Kynar 500® is a premium coating system. Consult your builder on pricing of this quality coating system.



**Patrician Bronze (ZK)**



**Natural Evergreen (NG)**



**Charcoal (CK)**



**Regal White (WK)**



**Ultra Brite Red (UB)**



**Surrey Beige (BG)**



**Regal Blue (RU)**



**Matte Black (BL)**



**Galvalume (GL)**  
(Not Painted)

Since all color chips are affected by age, lighting conditions, heat and mechanical processes, the chips on this card may vary slightly in color or finish from actual panels. Consult factory for other colors and finishes.

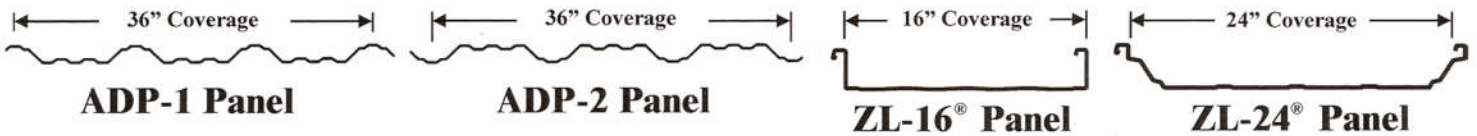
\*See Behlen paint warranties for specific chalk and fade rates.

Fluropon® is a registered name of the Sherwin-Williams Corporation.  
Kynar 500® is a registered name of Arkema, Inc.

## Fluropon® 70% Kynar 500® "Cool" Color

★Kynar 500® is a premium coating system. Consult your builder on pricing of this quality coating system.

### Frame Buildings



Colors	ZL-16® & ZL-24® Panels 24 Gauge	ADP Panels 26 Gauge	3" & 7½" Corr. Panels All Gauges	Total Solar Reflectance (TSR)		Thermal Emissivity (TE)	Solar Reflective Index (SRI)
				Initial	3-Year Exposure		
Patrician Bronze (ZK)	✓	✓	*	0.27	0.26	0.86	26
Natural Evergreen (NG)	✓	✓	*	0.26	0.25	0.84	24
Charcoal (CK)	✓	✓	*	0.32	0.32	0.85	32
Regal White (WK)	✓	✓	*	0.68	0.67	0.86	82
Ultra Brite Red (UB)	✓	✓	*	0.42	0.41	0.85	46
Surrey Beige (BG)	✓	✓	*	0.40	0.39	0.86	43
Regal Blue (RU)	✓	✓	*	0.26	0.25	0.85	24
Matte Black (BL)	✓	✓	*	0.26	0.25	0.86	25
Galvalume (GL)	✓	✓	*	0.68	0.55	0.08	55

✓ Denotes standard color and gauge. \* Minimum quantity requirements apply

### Energy Star Performance Specifications

Minimum Total Solar Reflectance (TSR)		
Roof Slope	Initial	3-Year Exposure
≤ 2:12	0.65	0.50
> 2:12	0.25	0.15

### S-Span Buildings



#### Behlen Mfg. Co.

P.O. Box 569 • 4025 E. 23rd St.

Columbus, NE 68602-0569

PH: 800-228-0340 • FAX: 402-563-7470

www.behlenbuildingsystems.com